



*Why replace
if we can
Re-Ply?!?*

Restore your roof with an
ASTEC® Re-Ply™ System
and get more roof for less money!



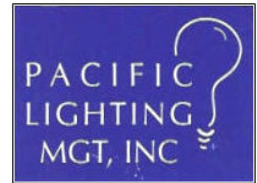
info@pactg.com



SAVES RUBBER, METAL, & ASPHALT ROOFS



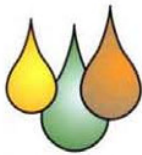
Our roof will be better than the original!!



Add ASTEC Advantages to Your Roof

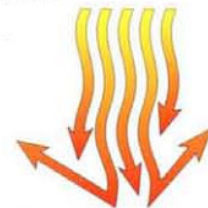
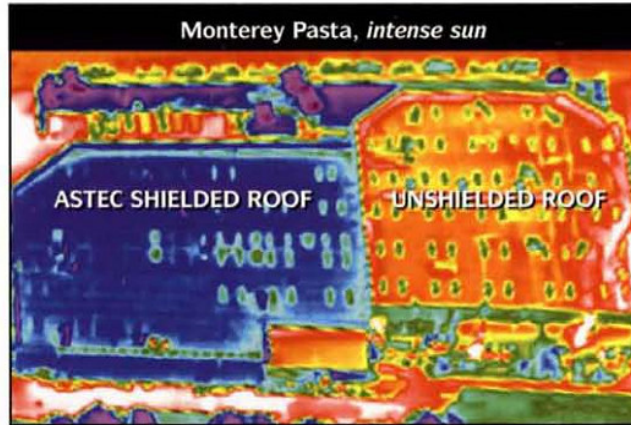
"El Nino produced some of the heaviest rains we've seen in this part of the country for many years. And no problems from the (ASTEC) roof..."

The **Re-Ply System** is fluid-applied in multiple layers. The seamless, cured membrane outperforms ordinary roofing surfaces over a broad range of key test characteristics



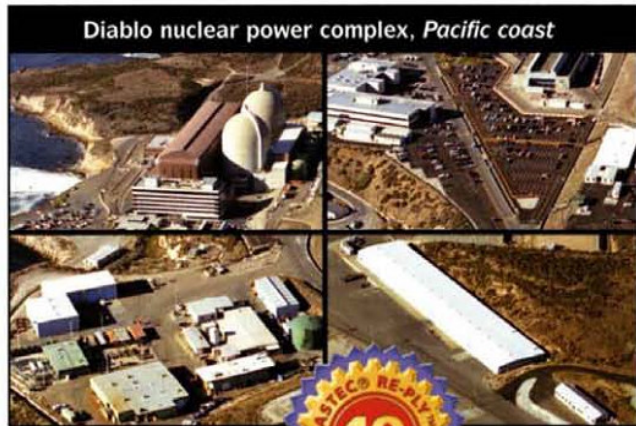
Add a Corrosion Barrier —

ASTEC Re-Ply roofing surfaces are virtually impervious to ocean salt spray, acid rain, and many other airborne corrosives and abrasives. It is formulated to withstand very hostile environments.



Add a Solar Shield —

Ceramic and titanium-based ASTEC Re-Ply roofing surfaces have very high reflectivity and heat dissipation — reducing heat and harmful U/V rays on your building. ← This infrared aerial photograph indicates that the ASTEC Re-Ply shielded surface is 50°F cooler than the unshielded roof.



Diablo nuclear power complex, Pacific coast



Digital Equipment Corporation, Arizona desert

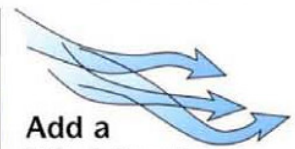


Add a Renewable Warranty —

Every ASTEC Re-Ply System is Warranted for ten years after application. As the warranty period ends, you may choose to have your ASTEC Re-Ply surface inspected, cleaned, restored, and the warranty renewed for another ten years. (Check all the benefits on the *ASTEC Re-Ply 10-Year Renewable Warranty*.) With periodic ASTEC inspections and maintenance — *this could be the last roof you will ever need!*



Light manufacturing, New York State



Add a Wind Breaker —

An ASTEC Re-Ply surface seals all joints, laps, and fasteners under a monolithic seamless barrier that strong winds, and driving rain or hail, virtually cannot rattle, lift, or erode.



Re-Ply™ System for Metal Roofs



Improves Metal Roofs

- Creates a seamless, weathertight barrier.
- Eliminates rust and corrosion.
- Reflects away heat and harmful U/V radiation.
- Surpasses R19 heat gain testing.
- Saves big temperature control and cooling costs.
- Greatly reduces thermal shock damage.
- Improves appearance.
- Eliminates roof replacement expenses.
- Provides a 10-Year Renewable Warranty.



1 Prepare Surface:
Remove scaling rust, and pressure wash to achieve a clean, sound surface. Tighten or replace loose fasteners.

2 Encapsulate Corrosion:
Apply *ASTEC B-16-71 Rust Control*, specially formulated to neutralize and halt further metal corrosion.

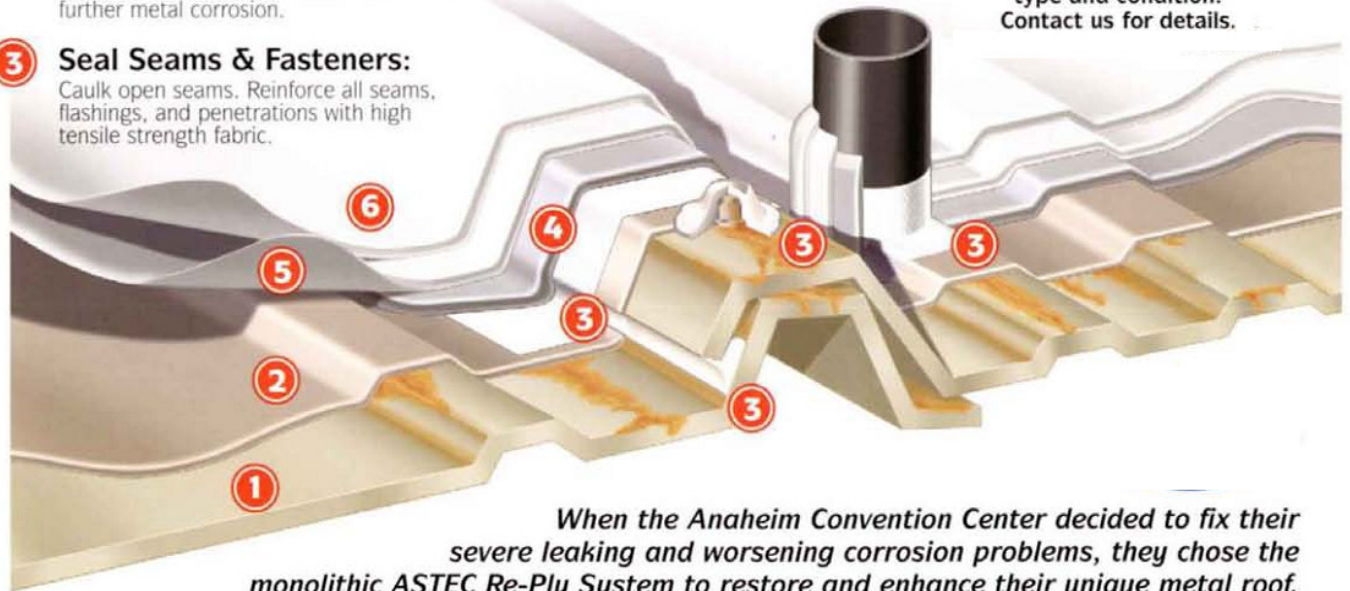
3 Seal Seams & Fasteners:
Caulk open seams. Reinforce all seams, flashings, and penetrations with high tensile strength fabric.

4 Seal Roof:
Flow on *ASTEC WPM#9 Waterproof Sealer* over all areas of caulking, reinforcing fabric, and fasteners to create a watertight base for the final seamless layers.

5 Apply Core Layer:
Flow on the first layer of *ASTEC #900 Ceramic Finish for Metal*. It provides a tough, weathertight, monolithic core layer, bonded over every square inch of the roof surface.

6 Apply Final Layer:
Flow on a second layer of *ASTEC #900 Ceramic Finish for Metal*. This final application will create a seamless, titanium-white surface of highly-reflective, ceramic-embedded roofing that remains waterproof, pliable, and virtually impervious to airborne corrosives over years of hostile environmental conditions.

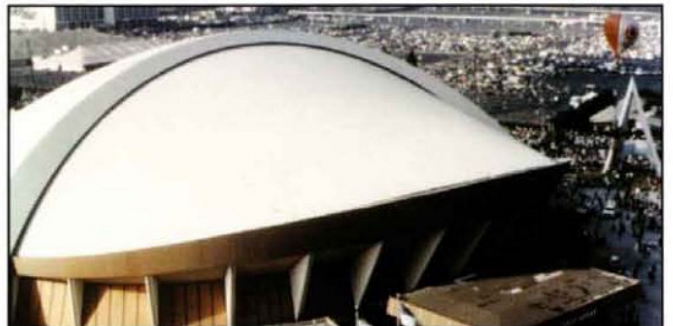
Procedures will vary by roof type and condition. Contact us for details.



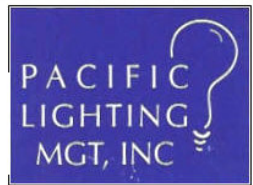
When the Anaheim Convention Center decided to fix their severe leaking and worsening corrosion problems, they chose the monolithic ASTEC Re-Ply System to restore and enhance their unique metal roof. "We looked at a variety of products, but nobody had a system like ASTEC..."



CONVENTION CENTER (metal roof)



CONVENTION CENTER (after Re-Ply)



Re-Ply™ System for Rubber & Asphalt Roofs

Improves Composite Roofs

- Creates a seamless, weathertight barrier.
- Stays pliable and weathertight in all climates.
- Withstands ponding water.
- Resists fungi and algae growth.
- Reflects away heat and harmful U/V radiation.
- Surpasses R19 heat gain testing.
- Saves big temperature control and cooling costs.
- Greatly reduces wind damage risk.
- Improves appearance.
- Eliminates roof replacement expenses.
- Provides a 10-Year Renewable Warranty.



1 Prepare Surface:

Pressure wash the old surface to eliminate loose material. Repair substrate, blisters, and cracks as needed.

2 Seal Seams:

Reinforce all roof, vent, duct, and flashing seams and laps with high tensile strength fabric. Saturate with the appropriate *ASTEC Base Sealer*.

3 Prime and Seal Surface:

Depending on the original composite surface, flow on one or two layers of either *ASTEC Base Sealer #8 for Rubber*, or *ASTEC Base Sealer #4 for Asphalt*. Both apply as fluids, filling all cracks, and curing as a seamless, pliable, membrane over the entire roof.

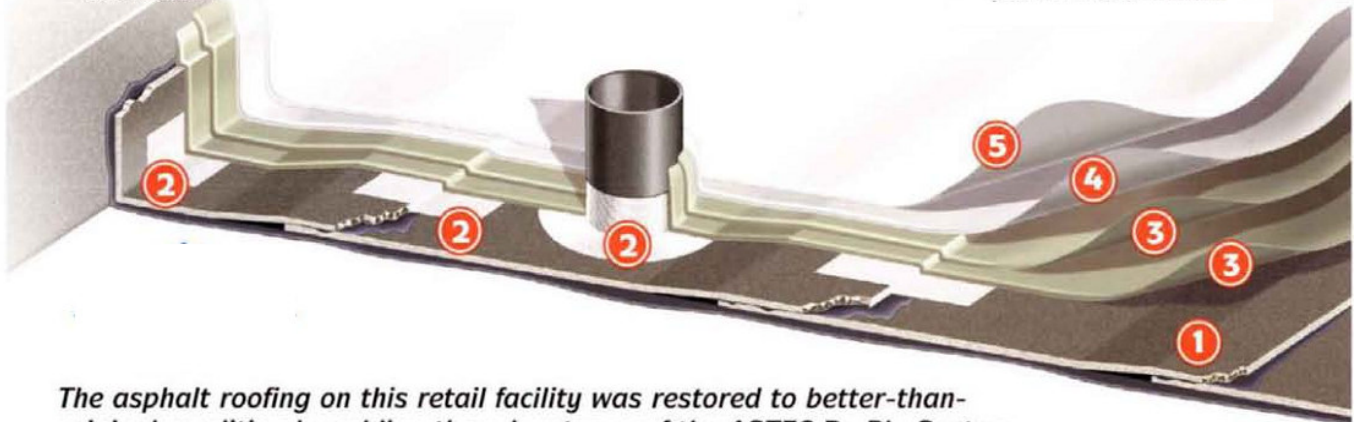
4 Apply Core Layer:

Flow on the first *ASTEC Re-Ply Finish* layer. It will bond with the *ASTEC Base Sealer* and provide a monolithic core base for the final surface.

5 Apply Surface Layer:

Flow on the final *ASTEC Re-Ply Finish* layer. The new surface will be a seamless, titanium-white ply of a highly-reflective roofing that is waterproof, pliable, and virtually impervious to airborne corrosives over years of hostile environmental conditions.

Procedures will vary by roof type and condition.
Contact us for details.



The asphalt roofing on this retail facility was restored to better-than-original condition by adding the advantages of the ASTEC Re-Ply System. The savings in cooling expenses alone will easily pay the cost of restoration over the life of the ASTEC Renewable Warranty.

